

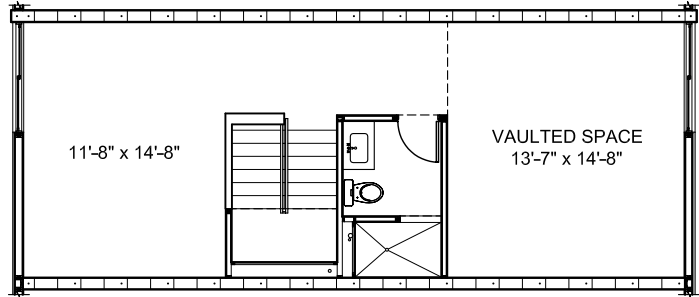


Portland 38

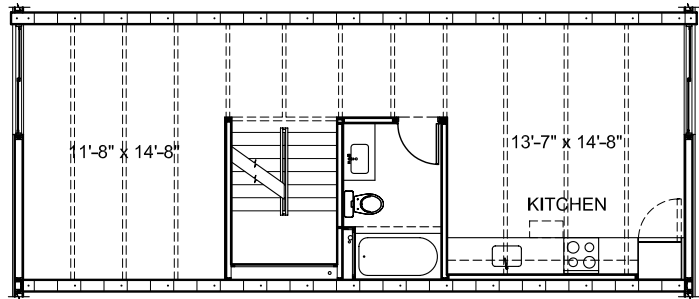
727 E. Portland Street
 Phoenix, AZ 85006
 Portland St. just East of 7th St.

Type H (2 total units)

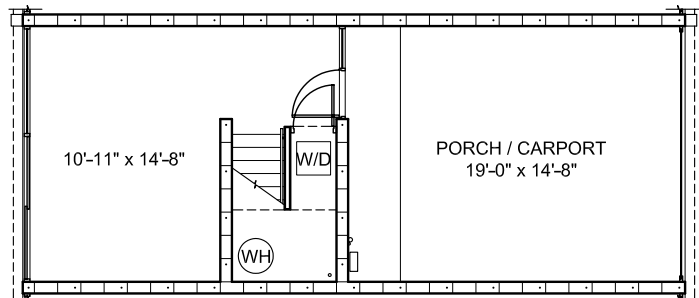
- 2 Bedroom + Office/Den (flex space)
- 2 Bathroom
- 1 Car Garage
- 1,488 GSF w/297 GSF Garage



Third Floor



Second Floor



First Floor

Sales by:
 Center City Realty
 602.254.1500
www.portland38.com



All dimensions and square footage measurements are approximate and may vary from the dimensions of the units as actually constructed. The square footage provided is gross square footage (measured to the exterior surface of the perimeter walls of the building and to the center of any party walls and includes stairwells). Gross square footage is more than the square footage within the interior surface of the perimeter walls and party walls as set forth on the recorded condominium plat. Seller reserves the right to change or withdraw any offer at any time. Prices subject to change without notice. Floorplans and renderings are artist's conception and may contain options which are not standard in all units. Seller reserves the right to make changes to floorplans, specifications, dimensions, features, design and elevations without prior notice.