

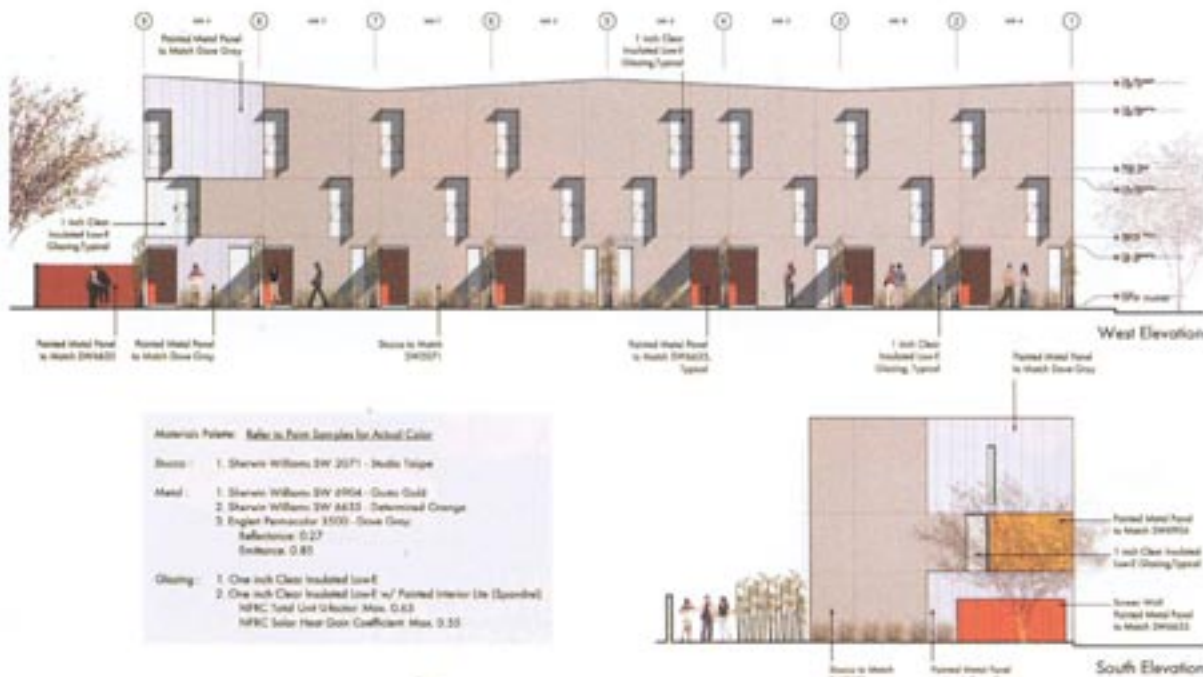
# PROGRESSIVE PADS

## THE AGE OF LOFT LIVING



The Duke

Remember when loft living was designated to hip hubs such as New York and San Francisco, leaving the other unfortunate cities to drag behind with blasé condos? Not anymore. Phoenix, Scottsdale and Tempe have blossomed over the past few years, developing large-scale renovations and smaller clusters of contemporary housing units in up-and-coming neighborhoods. As of now, there are more than 15 loft projects in the works that offer urbanites a savvy alternative to typical accommodations. Here's two hot-off-the-press additions to the list.





EVERGREEN 9

### EVERGREEN 9

In the same vicinity as the sold-out Willetta 9 lofts, these modern loft townhomes are open, spacious and simplistic. Their streamlined rectangular shape is formed of masonry walls and faces north for maximum usage of natural light without sunlight directly permeating the rooms. Located in downtown Phoenix on Willetta between Third and Seventh streets, Evergreen 9 is conveniently close to the action but situated off the main drag. Large-pane windows spanning the two-story space display views of the city skyline, while finished concrete floors complement the modern interior. Each of the nine lofts includes a private yard, individual entrance and garage or workshop on the ground level. The lofts are designed by Michael Underhill, AIA, a Harvard University and MIT grad who once worked with Charles and Ray Eames. These moderately priced living quarters are perfect for the upwardly mobile professional as well as the stylish family.

**Price Range: \$249,900 to \$289,000**

**Scheduled Completion: End of 2005**

### THE DUKE

If you think privacy is overrated and instead crave the feeling of being one with nature, The Duke loft condominiums in downtown Scottsdale are your answer. The exterior of these eight-unit, two-story lofts are outfitted in grey metal panels for superior protection against wear and tear and the band of windows on the second floor is insulated to keep the summer heat out. With individual entrances, sectioned off backyards — keeping with the material theme, even the fences that divide the yards are painted metal — and private garages, you'll be able to enjoy the benefits of single-home living without the hassles. Perfectly located just south of the Loloma Arts District by Marshall Way and Drinkwater Boulevard, each loft at The Duke features two bedrooms and a den. The poignant modern architecture was designed by CircleWest Architects, the team of geniuses behind the DC Ranch Marketplace buildings. These lofts are just begging to be filled with hip owners and their sleek modern furniture.

**Price Range: Target price under \$450,000**

**Completed: Fall 2006**

For more information contact Jarson & Jarson Realty at [www.azarchitecture.com](http://www.azarchitecture.com) or call 480.425.9300